



## Bailey Street, London, SE8 5EY

Immaculately presented and naturally bright two bedroom two bathroom apartment with in ever so popular Greenland Place. The property boasts a spacious open plan living area with a contemporary kitchen leading into the very generous south facing balcony, a stylish bathroom, and two well-proportioned double bedrooms one of which ensuite. Just a few steps from the building, residents can enjoy a state of art fitness facility alongside a 24 hr concierge. Onsite benefits include two grocery stores and a plethora of independent boutique shops and cafes on your doorstep.

Council Tax Band: C

**£2,450 Per month**

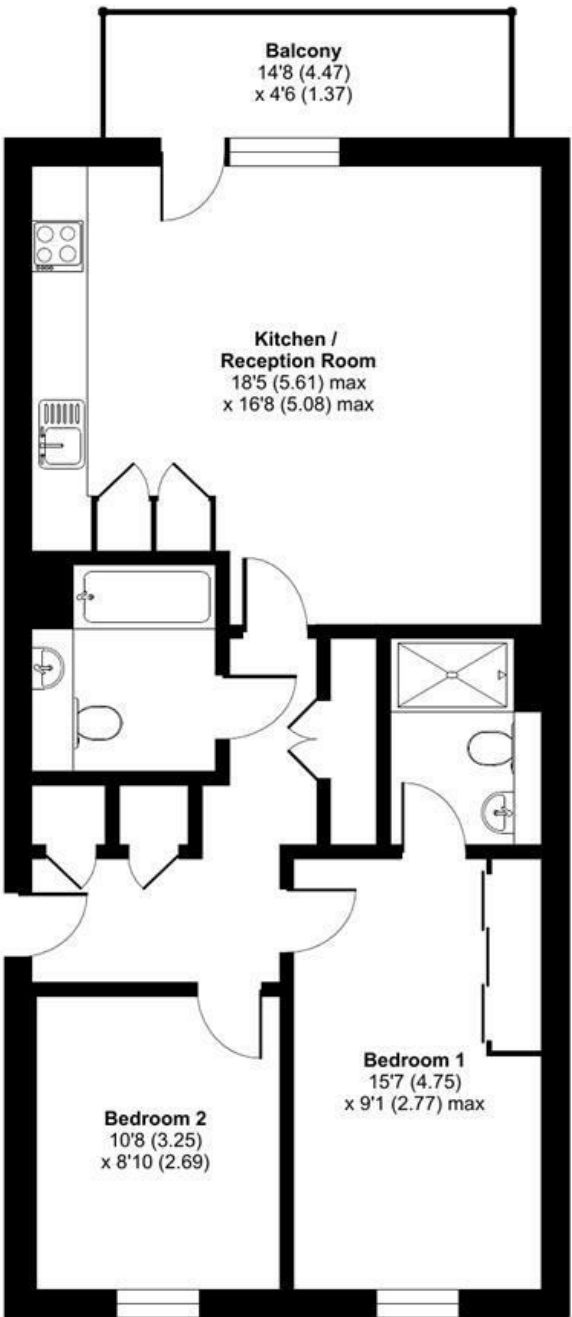
- Furnished
- Kings Sized Bed in the Main Bedroom
- Two Bathrooms
- 24 hr Concierge and Gym
- Bicycle Storage
- Communal Roof Terrace
- Plethora of Local Amenities
- South Facing Balcony
- Two Generous Double Bedrooms

**Alex & Matteo**  
ESTATE AGENTS

Gothenburg Court, Bailey Street, London, SE8

Approximate Area = 753 sq ft / 69.9 sq m

For identification only - Not to scale



FIFTH FLOOR



Floor plan produced in accordance with RICS Property Measurement Standards incorporating International Property Measurement Standards (IPMS2 Residential). © nitchecom 2023. Produced for Alex & Matteo Estate Agents. REF: 938689

Energy Efficiency Rating		
	Current	Potential
Very energy efficient - lower running costs		
(92 plus) <b>A</b>		
(81-91) <b>B</b>	84	84
(69-80) <b>C</b>		
(55-68) <b>D</b>		
(39-54) <b>E</b>		
(21-38) <b>F</b>		
(1-20) <b>G</b>		
Not energy efficient - higher running costs		
England & Wales		
EU Directive 2002/91/EC		